



Total Solution Provider in Saw Device

SL04803AV

48.0MHz IF SAW Filter
3.40MHz Bandwidth
Revision 0 : 6. March. 2008



- Electrical Characteristics
 - Package Dimensions
 - Testing Environment
 - Frequency Characteristics
-

SAWNICS Inc.

460 Cheonheung-ri, Seonggeo-eup, Cheonan-si, Chungcheongnam-do, 330-836 / Korea.
Tel: +82 41 550 9372 / Fax: +82 41 550 9399 / www.sawnics.com

□ Electrical Characteristics

Maximum Ratings

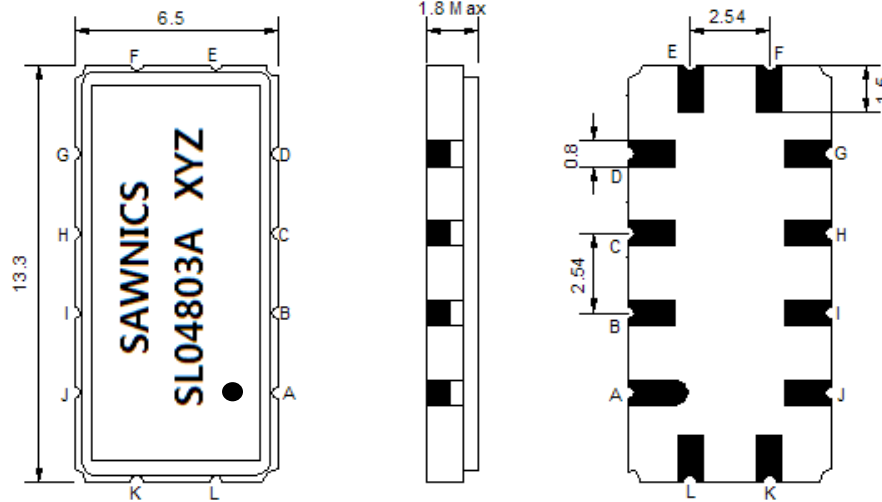
Parameters Description	Unit	Minimum	Typical	Maximum
Operating Temperature Range	°C	-40	25	85
Storage Temperature Range	°C	-40	-	85
Maximum DC Voltage	V	-	-	10
Maximum Input Power	dBm	-	-	10
Source Impedance (single ended) ⁽¹⁾	Ω	-	50	-
Load Impedance (single ended) ⁽¹⁾	Ω	-	2000	-
Package type & size	V			
Length x Width	mm ²	-	13.3 x 6.5	-
Height	mm	-	-	1.8

Electrical Specification

Parameters Description	Unit	Minimum	Typical	Maximum
Center Frequency (Fo)	MHz	-	48.0	-
Insertion Loss at Fo	dB	-	12.5	16.0
Temperature Coefficient	ppm/°C	-	-18	-
Amplitude Ripple within fo ±1.5 MHz	dB _{p-p}	-	0.6	1.0
Group Delay Variation within fo ±1.56 MHz	nsec	-	135	220
Absolute Delay at Fo	μsec	-	1.62	-
Bandwidth at -1.0 dB	MHz	3.125	3.40	-
Bandwidth at -3.0 dB	MHz	3.50	3.90	-
Relative Attenuation (ref: Max IL)				
Fc ±1.54 MHz	dB	-	2.6	-
Fc ±2.72 MHz	dB	30	34	-
Fc ±3.50 MHz	dB	40	45	-
Fc ±5.00 MHz	dB	45	47	-

Notes : (1) With Matching Network (Ref. Testing Environment Circuit as shown below).
Those impedances could be modified with different impedance values and/or structures, if necessary.

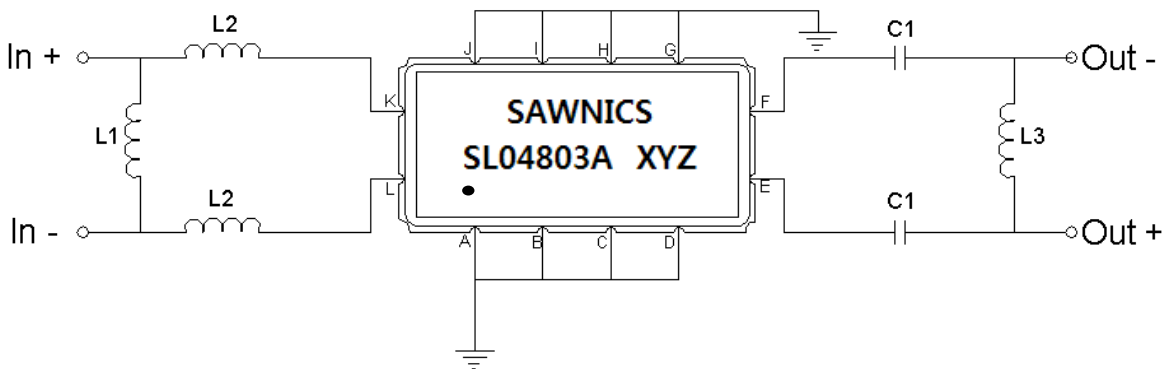
Package Dimensions



- ① SAWNICS: Brand
- ② SL04803A: Model Name
- ③ X : Date Code (Year)
- ④ Y : Date Code (Month)
- ⑤ Z : Date Code (Date)
- : Index Dot

Pin Description	
A, B, C, D, F, G, H, I, J, L	Ground
K	Input +
L	Input -
E	Output +
F	Output -

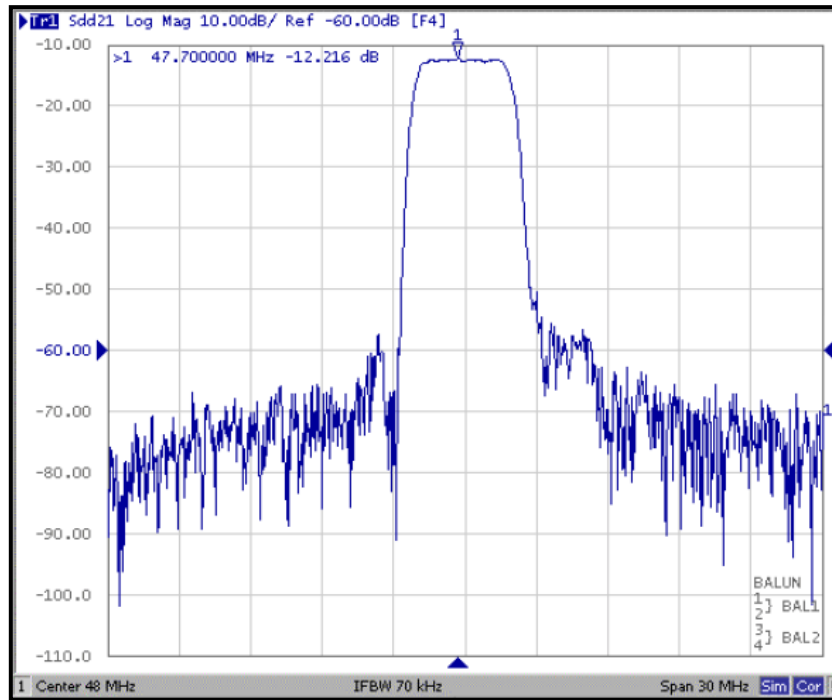
Testing Environment



Test Fixture & Values	
Input	L1=82nH , L2=18nH
Output	C1=68pF , L3=750nH
Source/Load Impedance	50/2000 Ω

Frequency Characteristics

Frequency Response



Pass Band Response and Group Delay Variation

